

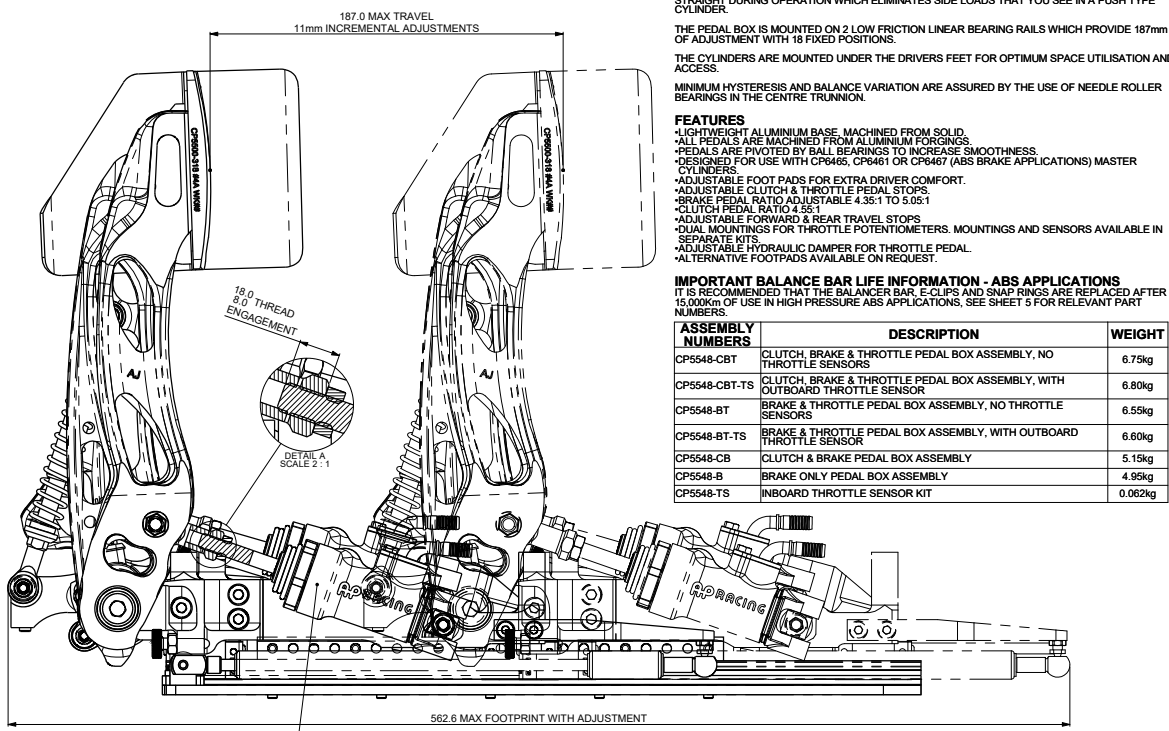
A0 INSTALLATION DRAWING

IF THIS DOCUMENT IS PRINTED IN HARD COPY, IT IS FOR INFORMATION USE ONLY AND THEREFORE IS NOT SUBJECT TO UPDATING CONTROLS. ALWAYS REFER TO SOLIDWORKS VIEWER FOR LATEST ISSUE



THIS DRAWING IS CONFIDENTIAL AND IS SUPPLIED ON THE EXPRESS CONDITION THAT IT SHALL NOT BE LOANED OR COPIED OR DISCLOSED TO ANY OTHER PERSON OR USED FOR ANY OTHER PURPOSE WITHOUT THE WRITTEN CONSENT OF AP RACING LTD.

AP Racing
Wheler Road
Coventry
CV3 4LB
Tel: +44 (0)24 7663 9595
Fax: +44 (0)24 7663 9599
e-mail: sales@apracings.co.uk
Web site: HTTP://www.apracings.com



HIGH EFFICIENCY MASTER CYLINDERS. FEATURES INCLUDE:

- BUILT IN LOW FRICTION CLEVIS
- SPECIAL INLET FOR LOW PROFILE FITTING
- M10 x 1.0 OUTLET PORT
- 25.4mm OF STROKE

MASTER CYLINDERS ARE NOT SUPPLIED WITH THIS PEDAL BOX

FOR INFORMATION ON CYLINDER SIZES PLEASE CONTACT AP RACING OR OBTAIN CP6465-1CD, CP6467-1CD & CP6461-1CD.

GENERAL DESCRIPTION
THIS UNIQUE PULL TYPE DESIGN ALLOWS THE LOAD THROUGH THE CYLINDERS TO REMAIN STRAIGHT DURING OPERATION WHICH ELIMINATES SIDE LOADS THAT YOU SEE IN A PUSH TYPE CYLINDER.

THE PEDAL BOX IS MOUNTED ON 2 LOW FRICTION LINEAR BEARING RAILS WHICH PROVIDE 187mm OF ADJUSTMENT WITH 18 FIXED POSITIONS.

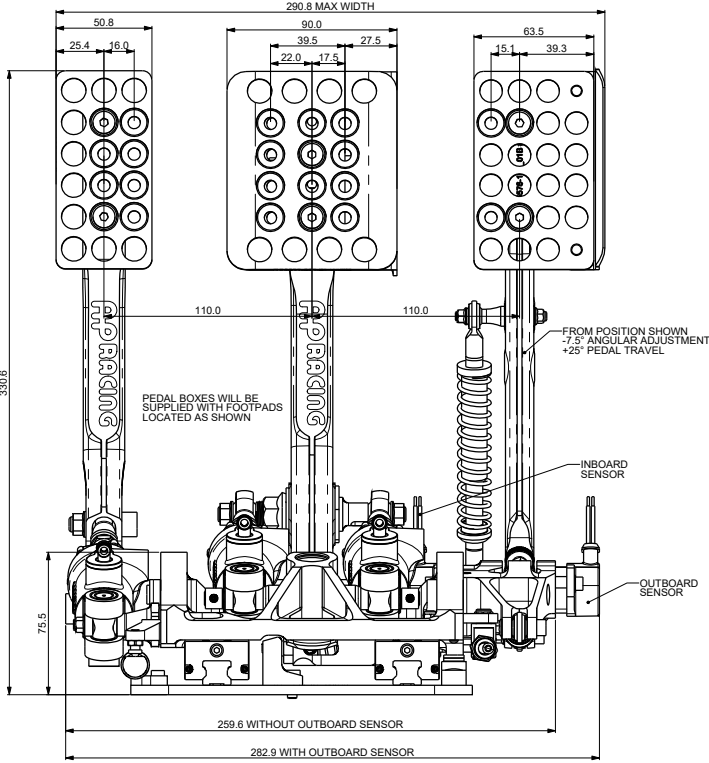
THE CYLINDERS ARE MOUNTED UNDER THE DRIVERS FEET FOR OPTIMUM SPACE UTILISATION AND ACCESS.

MINIMUM HYSTERESIS AND BALANCE VARIATION ARE ASSURED BY THE USE OF NEEDLE ROLLER BEARINGS IN THE CENTRE TRUNNION.

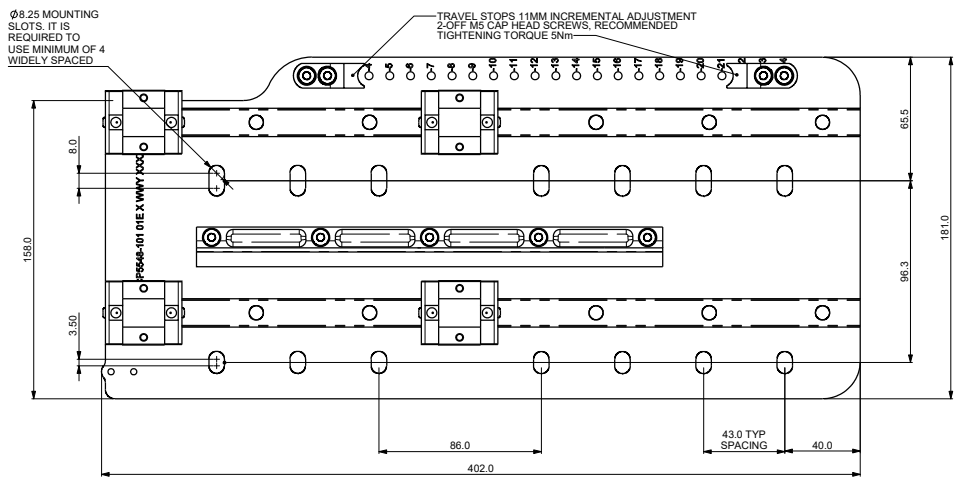
- FEATURES**
- LIGHTWEIGHT ALUMINIUM BASE, MACHINED FROM SOLID.
 - ALL PEDAL SAKE MACHINED FROM ALUMINIUM FORGINGS.
 - PEDALS ARE PIVOTED BY BALL BEARINGS TO INCREASE SMOOTHNESS.
 - DESIGNED FOR USE WITH CP6465, CP6461 OR CP6467 (ABS BRAKE APPLICATIONS) MASTER CYLINDERS.
 - ADJUSTABLE FOOT PADS FOR EXTRA DRIVER COMFORT.
 - ADJUSTABLE CLUTCH & THROTTLE PEDAL STOPS.
 - BRAKE PEDAL RATIO ADJUSTABLE 4.35:1 TO 5.05:1
 - CLUTCH PEDAL RATIO 4.55:1
 - ADJUSTABLE FORWARD & REAR TRAVEL STOPS
 - DUAL MOUNTINGS FOR THROTTLE POTENTIOMETERS. MOUNTINGS AND SENSORS AVAILABLE IN SEPARATE KITS
 - ADJUSTABLE HYDRAULIC DAMPER FOR THROTTLE PEDAL.
 - ALTERNATIVE FOOTPADS AVAILABLE ON REQUEST.

IMPORTANT BALANCE BAR LIFE INFORMATION - ABS APPLICATIONS
IT IS RECOMMENDED THAT THE BALANCE BAR, E-CLIPS AND SNAP RINGS ARE REPLACED AFTER 15,000km OF USE IN HIGH PRESSURE ABS APPLICATIONS, SEE SHEET 5 FOR RELEVANT PART NUMBERS.

ASSEMBLY NUMBERS	DESCRIPTION	WEIGHT
CP5548-CBT	CLUTCH, BRAKE & THROTTLE PEDAL BOX ASSEMBLY, NO THROTTLE SENSORS	6.75kg
CP5548-CBT-TS	CLUTCH, BRAKE & THROTTLE PEDAL BOX ASSEMBLY, WITH OUTBOARD THROTTLE SENSOR	6.80kg
CP5548-BT	BRAKE & THROTTLE PEDAL BOX ASSEMBLY, NO THROTTLE SENSORS	6.55kg
CP5548-BT-TS	BRAKE & THROTTLE PEDAL BOX ASSEMBLY, WITH OUTBOARD THROTTLE SENSOR	6.60kg
CP5548-CB	CLUTCH & BRAKE PEDAL BOX ASSEMBLY	5.15kg
CP5548-B	BRAKE ONLY PEDAL BOX ASSEMBLY	4.95kg
CP5548-TS	INBOARD THROTTLE SENSOR KIT	0.062kg

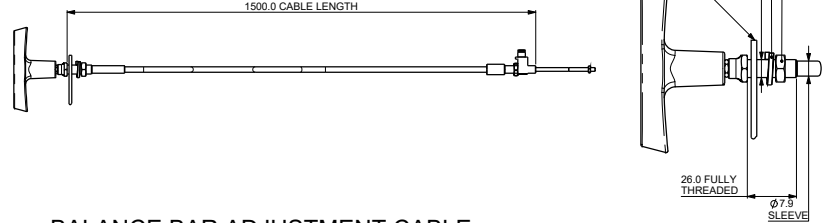


MOUNTING TRAY DETAIL



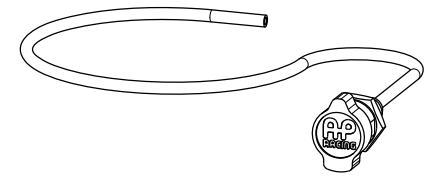
RELEASE CABLE

INCLUDED IN ASSEMBLY
PART NUMBER: CP5548-122



BALANCE BAR ADJUSTMENT CABLE

INCLUDED IN ASSEMBLY
PART NUMBER: CP2905-18
1200mm LONG CABLE



Alterations

Date & No.	Particulars	Drawn	Checked
10/03/20 B8103	FIRST ISSUE		
14/04/2022 B8350_01	CP5548-100 REPLACED BY CP5548-300 SHEET 4 SHEET 2 TABLE UPDATED TO SHOW CP5548-300	C11	ADB
15/07/22 B8281_01	SHEET 1 IMPORTANT BALANCE BAR LIFE INFORMATION NOTE ADDED SHEET 3 THROTTLE SENSOR DETAILS NOTE UPDATED	G10	TS
03/01/23 RAC23489	SHEET 1 ADDED DIMENSIONS ADDED ASSEMBLY WEIGHTS ADDED THREAD ENGAGEMENT GUIDELINES SHEET 2 ADDED PEDAL RATIO INFO SHEET 3 ADDED SENSOR NOTE SHEET 7 ADDED INBOARD SENSOR DETAIL	# M12 L4	SGW
03/01/23 RAC23489	SHEET 4 CP5548-136 WAS CP5548-107	P4	SGW

SCALE 1:1 SHEET 1 OF 7

DRAWN: Sten Wahlstrom

APPROVED:

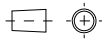
DERIVED FROM:

TITLE: FLOOR MTG PULL TYPE SLIDING PEDAL BOX 2nd GEN

DRG NO: CP5548-1CD

A0 INSTALLATION DRAWING

IF THIS DOCUMENT IS PRINTED IN HARD COPY, IT IS FOR INFORMATION USE ONLY AND THEREFORE IS NOT SUBJECT TO UPDATING CONTROLS. ALWAYS REFER TO SOLIDWORKS VIEWER FOR LATEST ISSUE



FIRST ANGLE PROJECTION

THIS DRAWING IS CONFIDENTIAL AND IS SUPPLIED ON THE EXPRESS CONDITION THAT IT SHALL NOT BE LOANED OR COPIED OR DISCLOSED TO ANY OTHER PERSON OR USED FOR ANY OTHER PURPOSE WITHOUT THE WRITTEN CONSENT OF AP RACING LTD.



AP Racing
Wheler Road
Coventry
CV3 4LB
Tel: +44 (0)24 7663 9595
Fax: +44 (0)24 7663 9599
e-mail: sales@aprac.com
Web site: HTTP://www.aprac.com

Alterations	
Date & No.	Particulars
-	SEE SHEET 1 FOR ISSUE INFORMATION.

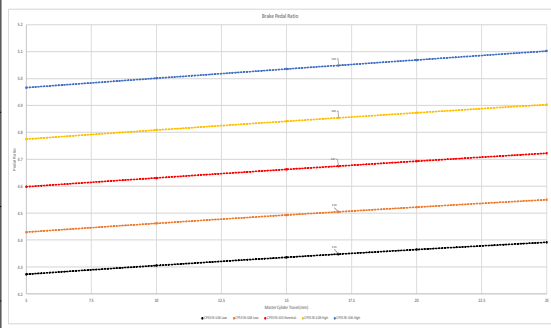
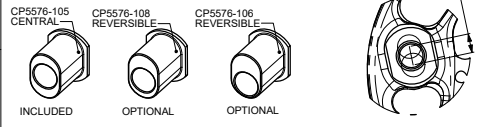
BRAKE RATIO ADJUSTMENT DETAILS

THE BRAKE PEDAL KINEMATICS PROVIDE THE DRIVER WITH A PEDAL RATIO THAT RISES THROUGH THE PEDAL STROKE. THIS REDUCES THE EFFORT REQUIRED TO REACH MAX BRAKE LOAD, IMPROVING BRAKING APPLICATION AND REDUCES DRIVER FATIGUE WITHOUT AFFECTING SENSITIVITY AND PEDAL FEEL.

BASED ON GT CAR SEATING POSITIONS THE OVERALL PEDAL RATIO IS SHOWN IN THE GRAPH BELOW. USE THIS TO SUPPLEMENT BRAKE EFFORT CALCULATIONS.

BRAKE PEDAL RATIO ADJUSTMENT BOBBINS:
CP5576-105 - NOMINAL - 4.67:1
CP5576-108 - OFFSET - 4.85:1 OR 4.50:1
CP5576-106 - OFFSET - 5.05:1 OR 4.35:1

PEDAL BOX IS SUPPLIED WITH CP5576-105, OFFSET ADJUSTMENT BOBBIN CP5576-100 OFFSET 108 AND CP5576-106 CAN BE BOUGHT SEPARATELY.

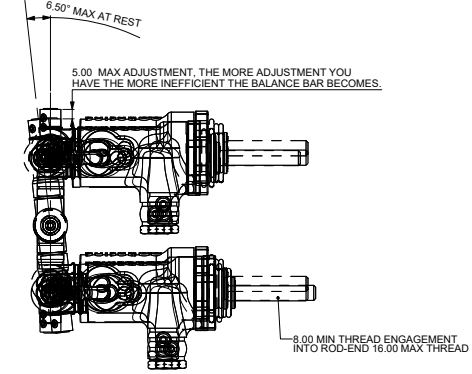


SETTING UP THE BALANCE BAR

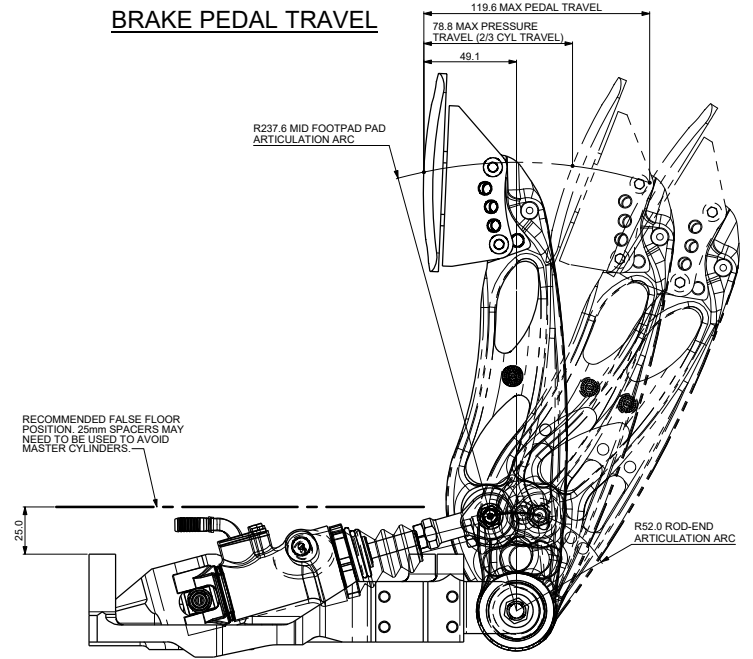
FOR MAX EFFICIENCY THE BALANCE BAR SHOULD BE SQUARE TO THE CYLINDERS AT MAX BRAKE APPLICATION. WITH BALANCE BAR IN CENTRAL POSITION, TO ADJUST, CHANGE THE THREAD ENGAGEMENT INTO THE ROD-ENDS WHILE RESPECTING MIN / MAX THREAD ENGAGEMENT.

BALANCE BAR MUST BE SQUARE TO MASTER CYLINDERS AT FULL BRAKE LOAD. AT REST THE MAX ARTICULATION IS 6.50°.

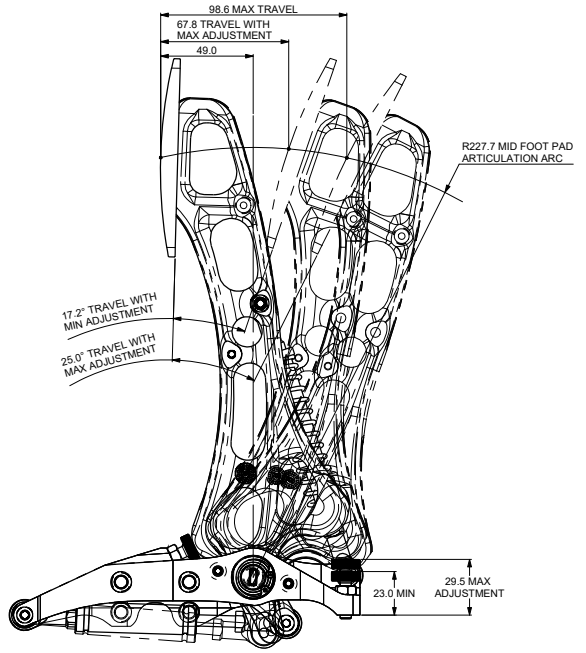
CHECK THAT THE MASTER-CYLINDER PISTONS FULLY RETURN BEFORE USE. THIS CAN BE CHECKED BY PULLING THE BRAKE PEDAL AND CHECKING THAT THE PISTONS DO NOT MOVE FURTHER BACK.



BRAKE PEDAL TRAVEL

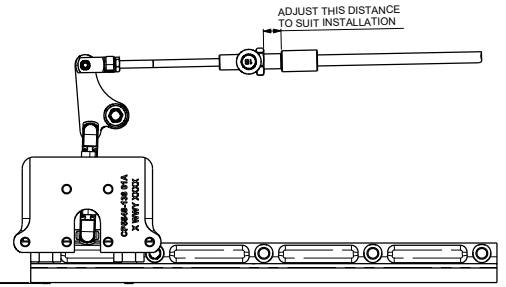


THROTTLE PEDAL TRAVEL



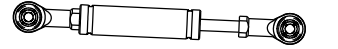
SETTING UP THE RELEASE CABLE

WITH THE RELEASE CABLE CORRECTLY SET UP THE LOCKING PIN SHOULD PROTRUDE TOUGHLY 0.50mm THROUGH THE LOCKING RAIL. ANY TIGHT BEND IN THE RELEASE CABLE WILL CAUSE THE LOCKING MECHANISM TO BE ACTUATED. ADJUSTMENT WILL NEED TO BE MADE TO THE OUTER SHEATH OF THE CABLE TO ENSURE THAT THE LOCKING MECHANISM IS FULLY ENGAGED IN ALL POSITIONS OF THE PEDAL BOX.

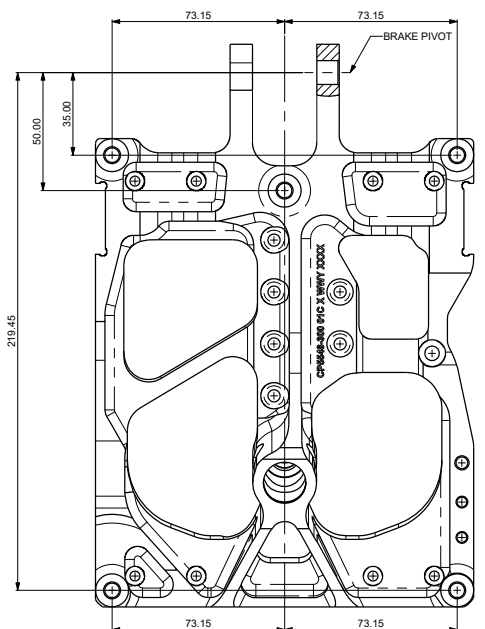


THROTTLE DAMPER ADJUSTMENT

THE DAMPER HAS AN ADJUSTABLE RATE OF 20-800N. IT IS ADJUSTED BY POSITIONING IT IN THE MOST EXTENDED OR COMPRESSED POSITION AND TWISTING THE ROD. THE DAMPER IS SET TO MEDIUM DAMPING AS SUPPLIED.



FALSE FLOOR MOUNTING LOCATIONS



SCALE 1:1	SHEET 2 OF 7
DRAWN Sten Wahlstrom	
APPROVED	
DERIVED FROM CP5538-9m	
TITLE BRAKE PEDAL RATIO BOBBIN	
DRG NO. CP5548-1CD	

AO INSTALLATION DRAWING

IF THIS DOCUMENT IS PRINTED IN HARD COPY, IT IS FOR INFORMATION USE ONLY AND THEREFORE IS NOT SUBJECT TO UPDATING CONTROLS. ALWAYS REFER TO SOLIDWORKS VIEWER FOR LATEST ISSUE



FIRST ANGLE PROJECTION

THIS DRAWING IS CONFIDENTIAL AND IS SUPPLIED ON THE EXPRESS CONDITION THAT IT SHALL NOT BE LOANED OR COPIED OR DISCLOSED TO ANY OTHER PERSON OR USED FOR ANY OTHER PURPOSE WITHOUT THE WRITTEN CONSENT OF AP RACING LTD.



AP Racing
Wheler Road
Coventry
CV3 4LB

Tel: +44 (0)24 7663 9595
Fax: +44 (0)24 7663 9559
e-mail: sales@apracings.co.uk

© AP Racing Ltd. 2023 Web site: HTTP://www.apracings.com

THROTTLE SENSOR DETAIL

DUAL REDUNDANCY PENNY & GILES SRH302 SENSOR

Electrical

Measurement range	As shown
Supply voltage	5Vdc +0.5Vdc and 9-30Vdc - auto selects
Supply current	<17.5mA per output channel
Supply reverse polarity protection	Yes
Short-circuit protection to GND	Yes
Short-circuit protection to supply	Only with 5Vdc regulated supply
Over-voltage protection	Up to 40Vdc
Power-on settlement	>1s
Resolution	12-bit (0.025° of measurement range)
Linearity (absolute)	+/-0.4%
Temperature coefficient	<30ppm/°C in 5Vdc mode, <110ppm/°C in 9-30Vdc mode

Voltage Outputs

0.2-4.8V output option (5V supply)	4-96% +/-1% of Vsupply over measurement range
0.2-4.8V output option (9-30V supply)	0.2-4.8V +/-3% absolute
Monotonic range (0.2-4.8V output option)	2%/0.1V to 98%/4.9V nominal
Load resistance	10kOHM min. (resistive to GND)
Output noise	<1mV rms
Input/output delay	<2ms

Mechanical

Mechanical angle	360° continuous
Operating speed, MAX	3600°/S
Torque	120 gm cm max
Weight	<70g
Mounting	2x holes to suit M4 screws tightened to 2.9Nm
Cable	18AWG 1.65mm OD

Environmental

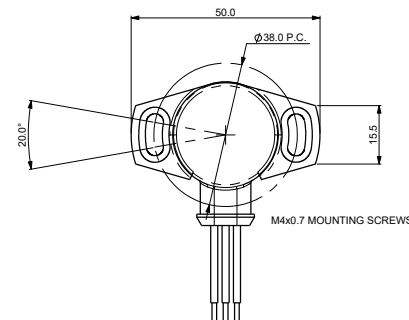
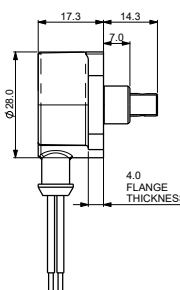
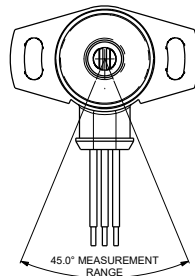
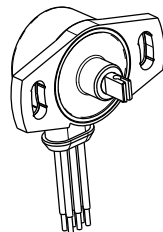
Operating temperature	-40°C to 140°C (-40°C to 120°C if conduit fitted) -40°C to 15.7°C at 9V (de-rate by 1.7°C for each 1V increase)
Storage temperature	-40°C to 140°C (-40°C to 120°C if conduit fitted)
Sealing	IP69k (excluding connector) if conduit fitted
Vibration	BS EN 60068-2-64: 1995 Sec 8.4 (31.4g rms) 20 to 2000Hz
Shock	Survival to 2500g all axes
FE	20 million operations
MTTFd	>300 years
Electromagnetic interference	EN 61000-4-6 to 100V/m 80-1000MHz & 1.4-2.7GHz

Electrical connections

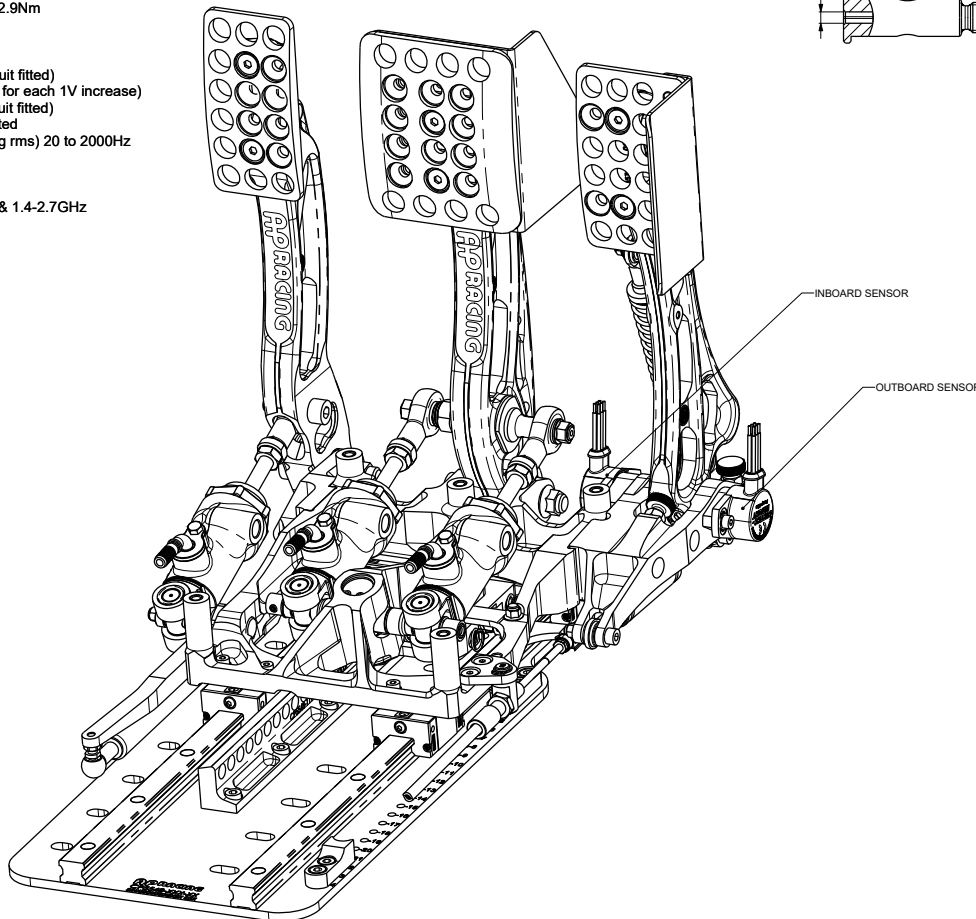
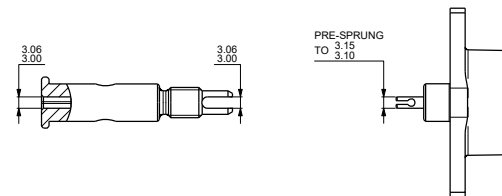
4-core cable, 18 AWG

Cable colour	Description
Red	V+ 1
Black	GND 1
Yellow	OUTPUT 1

Blue	V+ 2
Green	GND 2
White	OUTPUT 2



PIVOT SHAFT SLOT DETAIL



Alterations

Rev	Date & No.	Particulars	Zone	Initials
01		SEE SHEET 1 FOR ISSUE INFORMATION.		

SCALE 1:1	SHEET 3 OF 7
DRAWN	Sten Wahlstrom
APPROVED	
DERIVED FROM	
TITLE	
FLOOR MTG PULL TYPE	
SLIDING PEDAL BOX 2nd GEN	
DRG NO.	CP5548-1CD

A0 INSTALLATION DRAWING

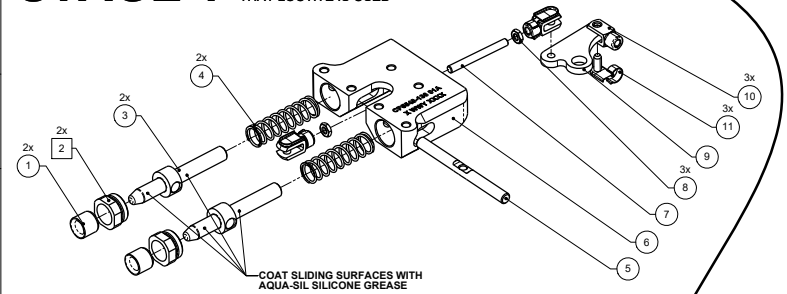
IF THIS DOCUMENT IS PRINTED IN HARDCOPY, IT IS FOR INFORMATION USE ONLY AND THEREFORE IS NOT SUBJECT TO UPDATING CONTROLS. ALWAYS REFER TO SOLIDWORKS VIEWER FOR LATEST ISSUE



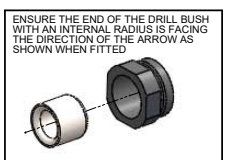
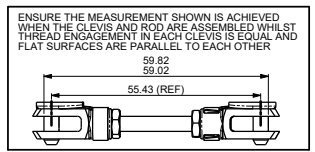
THIS DRAWING IS CONFIDENTIAL AND IS SUPPLIED ON THE EXPRESS CONDITION THAT IT SHALL NOT BE LOANED OR COPIED OR DISCLOSED TO ANY OTHER PERSON OR USED FOR ANY OTHER PURPOSE WITHOUT THE WRITTEN CONSENT OF AP RACING LTD.

AP RACING
 AP Racing
 Wheeler Road
 Coventry
 CV3 4LB
 Tel: +44 024 7663 9595
 Fax: +44 024 7663 9599
 e-mail: sales@apracings.co.uk
 Web site: HTTP://www.apracings.com

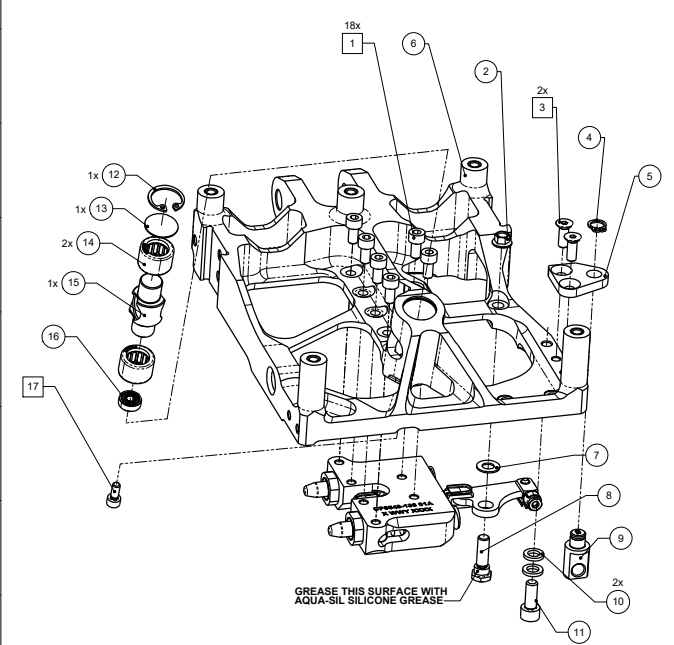
STAGE 1 SQUARE BOX AROUND ITEM No. INDICATES THAT LOCTITE IS USED



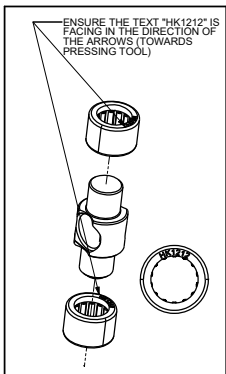
COAT SLIDING SURFACES WITH AQUA-SIL SILICONE GREASE



STAGE 2

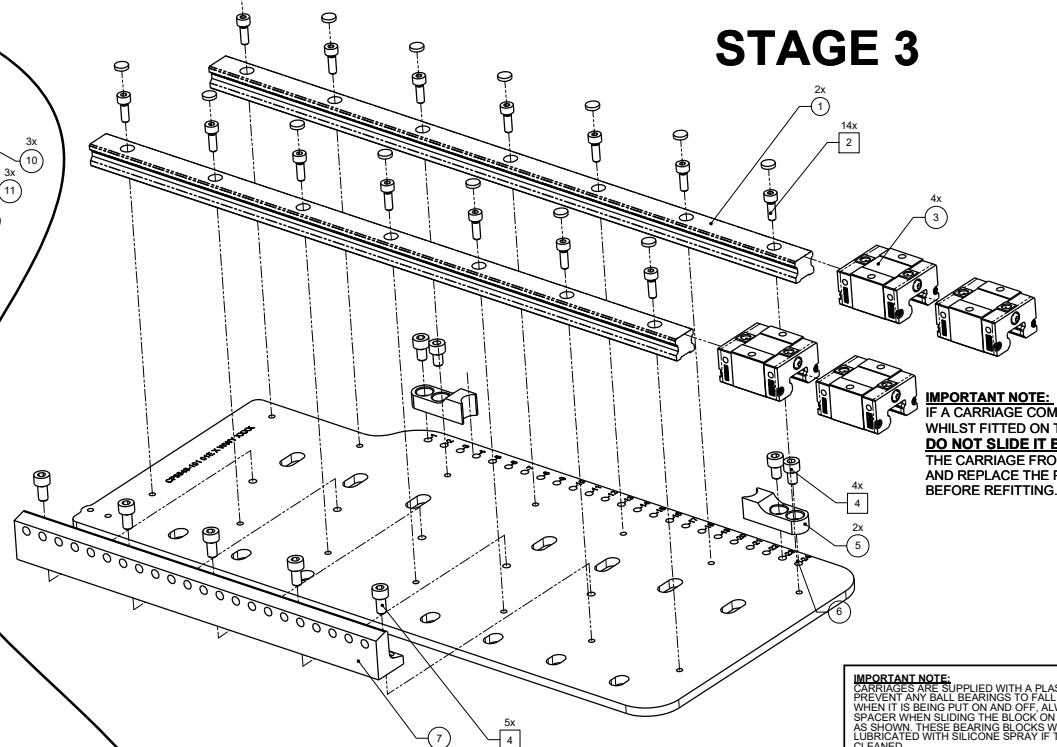


GREASE THIS SURFACE WITH AQUA-SIL SILICONE GREASE

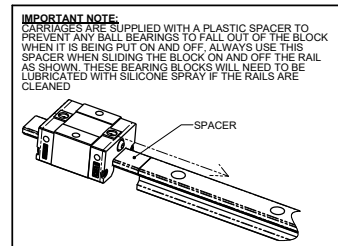


ENSURE THE TEXT "HK1212" IS FACING IN THE DIRECTION OF THE ARROWS (TOWARDS PRESSING TOOL)

STAGE 3



IMPORTANT NOTE:
 IF A CARRIAGE COMES OFF THE RAIL WHILST FITTED ON TO THE BASEPLATE **DO NOT SLIDE IT BACK ON**. REMOVE THE CARRIAGE FROM THE BASEPLATE AND REPLACE THE PLASTIC SPACER BEFORE REFITTING.



IMPORTANT NOTE:
 CARRIAGES ARE SUPPLIED WITH A PLASTIC SPACER TO PREVENT ANY BALL BEARINGS TO FALL OUT OF THE BLOCK WHEN IT IS BEING PUT ON AND OFF. ALWAYS USE THIS SPACER WHEN SLIDING THE BLOCK ON AND OFF THE RAIL AS SHOWN. THESE BEARING BLOCKS WILL NEED TO BE LUBRICATED WITH SILICONE SPRAY IF THE RAILS ARE CLEANED

STAGE 1						
ITEM No.	PART No.	DESCRIPTION	QTY	TORQUE	LOCTITE	
1	CP5548-110	RELEASE MECH. DRILL BUSH	2	-	-	
2	CP5548-109	RELEASE MECH. END CAP	3	5Nm	243	
3	CP5548-108	RELEASE MECH. LOCKING PIN	2	-	-	
4	CP5548-113	RELEASE MECH. SPRING	2	-	-	
5	CP5548-112	RELEASE MECH. LOCKING PIN	1	-	-	
6	CP5548-136	RELEASE MECH. PIN HOUSING	1	-	-	
7	CP5548-117	THREADED BAR M4x39x0.70	1	-	-	
8	CP5548-119	NUT M4x0.7	2	3.5Nm	-	
9	CP5548-116	RELEASE MECH. CRANK	1	-	-	
10	CP5548-120	CLEVIS JOINT	3	-	-	
11	CP5548-121	STEEL CLEVIS RETENSION CLIP	2	-	-	

STAGE 2						
ITEM No.	PART No.	DESCRIPTION	QTY	TORQUE	LOCTITE	
1	CP9100-132	SCREW M5x10x1.00 CAP	6	6.8Nm	243	
2	CP3423-107	NUT M6x1 KAYLOCK	1	5Nm	-	
3	CP5538-115	SCREW M5x14x0.80	2	6.8Nm	243	
4	CP5548-125	CIRCLIP EXT 4.8	1	-	-	
5	CP5548-115	RELEASE MECH. BRACKET	1	-	-	
6	CP5548-300	BASEPLATE	1	-	-	
7	CP2494-1305	WASHER 12.5x6.5x0.80	1	-	-	
8	CP5548-118	SHOULDER SCREW M6x1.00	1	5Nm	-	
9	CP5548-122	RELEASE MECH. CABLE	1	-	-	
10	CP5500-117	WASHER 10x6x1	2	-	-	
11	CP5576-129PL	SCREW M6x15x1.00 CAP	1	10Nm	-	
12	CP2232-39	INTERNAL CIRCLIP 18	1	-	-	
13	CP5520-201	BALANCEBAR END PLATE	1	-	-	
14	CP5548-123	NEEDLE BEARING HK1212	2	-	-	
15	CP5548-126	BARREL NUT	1	-	-	
16	CP5548-124	BALL BEARING 604 2Z	1	-	-	
17	CP3555-199	SCREW M4x10x0.7 CAP	1	3.5Nm	243	

STAGE 3						
ITEM No.	PART No.	DESCRIPTION	QTY	TORQUE	LOCTITE	
1	CP5548-102	LINEAR BEARING RAIL	2	-	-	
2	CP3215-115	SCREW M4x12x0.70 CAP	14	3Nm	243	
3	CP5548-103	LINEAR BEARING CARRIAGE	4	-	-	
4	CP3749-110	SCREW M5x8x0.80 CAP	9	5Nm	243	
5	CP5548-104	TRAVEL STOP BRACKET	2	-	-	
6	CP5548-101	MOUNTING TRAY	1	-	-	
7	CP5548-111	RELEASE MECH. LOCKING RAIL	1	-	-	

Alterations			
Date & No.	Particulars	Drawn	Checked
-	SEE SHEET 1 FOR ISSUE INFORMATION.	-	-

SCALE 1:1 SHEET 4 OF 7
 DRAWN: Stan Wahlstrom
 APPROVED:
 DERIVED FROM:
 TITLE:
 FLOOR MTG PULL TYPE
 SLIDING PEDAL BOX 2nd GEN
 DRG NO.: CP5548-1CD

A0 INSTALLATION DRAWING

IF THIS DOCUMENT IS PRINTED IN HARD COPY, IT IS FOR INFORMATION USE ONLY AND THEREFORE IS NOT SUBJECT TO UPDATING CONTROLS. ALWAYS REFER TO SOLIDWORKS VIEWER FOR LATEST ISSUE



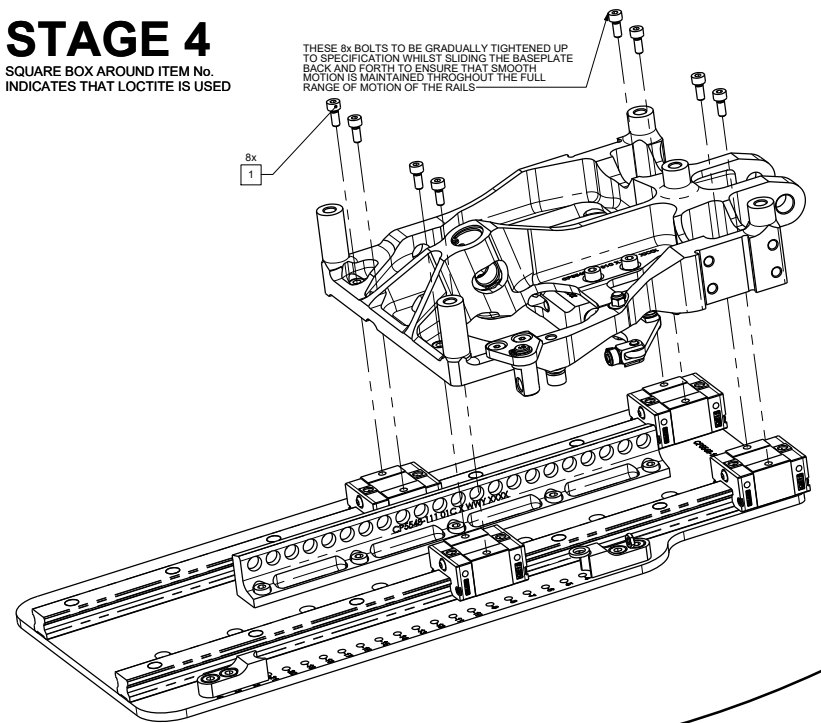
THIS DRAWING IS CONFIDENTIAL AND IS SUPPLIED ON THE EXPRESS CONDITION THAT IT SHALL NOT BE LOANED OR COPIED OR DISCLOSED TO ANY OTHER PERSON OR USED FOR ANY OTHER PURPOSE WITHOUT THE WRITTEN CONSENT OF AP RACING LTD.

AP RACING
 AP Racing
 Wheeler Road
 Coventry
 CV3 4LB
 Tel: +44 (0)24 7663 9595
 Fax: +44 (0)24 7663 9599
 e-mail: sales@apracings.co.uk
 © AP Racing Ltd. 2023
 Web site: HTTP://www.apracings.com

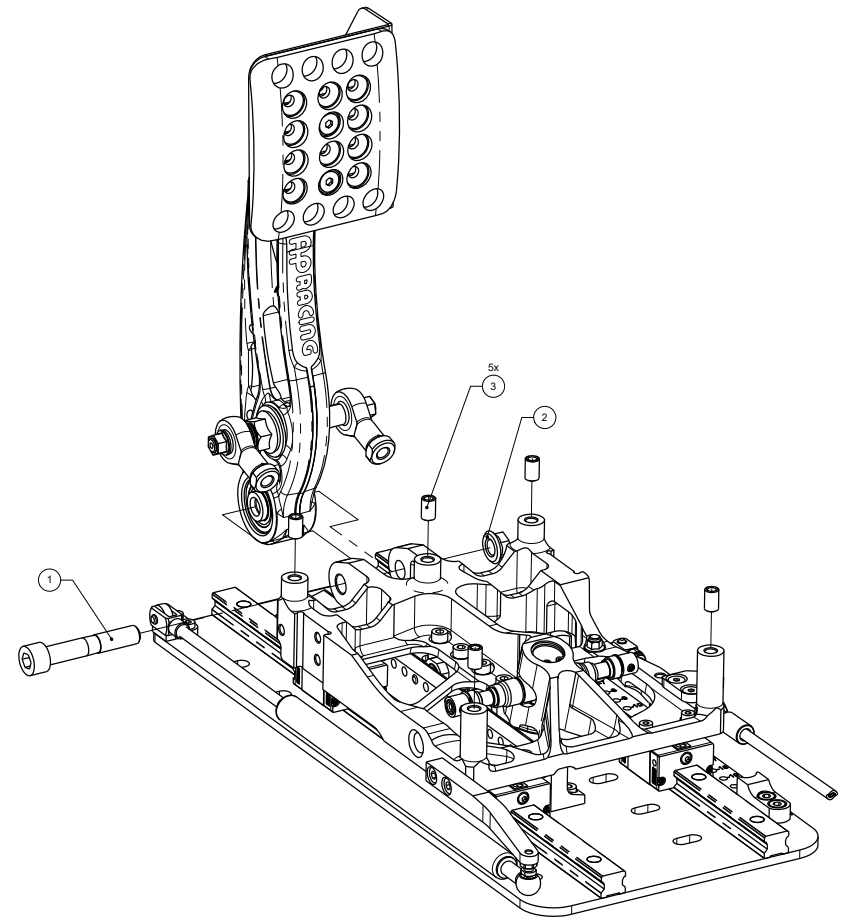
STAGE 4

SQUARE BOX AROUND ITEM No. INDICATES THAT LOCTITE IS USED

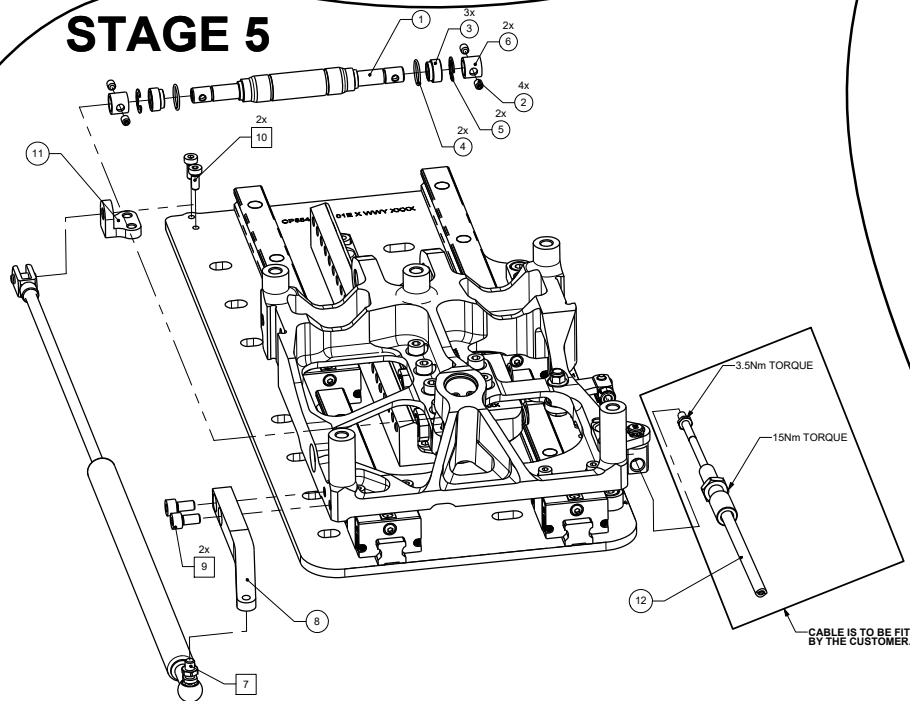
THESE 8x BOLTS TO BE GRADUALLY TIGHTENED UP TO SPECIFICATION WHILST SLIDING THE BASEPLATE BACK AND FORTH TO ENSURE THAT SMOOTH MOTION IS MAINTAINED THROUGHOUT THE FULL RANGE OF MOTION OF THE RAILS



STAGE 6



STAGE 5



STAGE 4					
ITEM No.	PART No.	DESCRIPTION	QTY	TORQUE	LOCTITE
1	CP3555-199	BOLT-M4x10x0.7 CAP	8	3.5	243

STAGE 5					
ITEM No.	PART No.	DESCRIPTION	QTY	TORQUE	LOCTITE
1	CP5517-157	BALANCE BAR	1	-	-
2	CP5500-113ST	GRUB SCREW-M4x5x0.7	4	-	-
3	CP5517-124	BALANCEBAR SPACER	2	-	-
4	CP5517-161	SNAPRING	2	-	-
5	CP5517-123	CIRCLIP EXT 6.00	2	-	-
6	CP5517-160	BALANCEBAR BACKUP SPACER	2	-	-
7	CP5538-109	PEDAL BOX GAS SPRING	1	6Nm	243
8	CP5548-106	PEDAL BOX GAS STRUT BRACKET	1	-	-
9	CP5100-132	SCREW-M6x10x0.80 CAP	2	6Nm	243
10	CP5200-109	BOLT-M4x10x0.70 CAP-LOW	2	3Nm	243
11	CP5548-105	PEDAL BOX GAS STRUT BRACKET	1	-	-
12	CP5548-122	RELEASE MECHANISM CABLE	1	SEE NOTE	-

STAGE 6					
ITEM No.	PART No.	DESCRIPTION	QTY	TORQUE	LOCTITE
1	CP5200-108	BOLTM6-M10x58x1.50 CAP	1	-	-
2	CP5427-101	NUT M10x1.50 KAYLOCK	1	40Nm	-
3	CP3344-111	HELICOIL-M6x1.00x2.00	5	-	-

Alterations			
Rev	Date & No.	Particulars	Drawn
0	-	SEE SHEET 1 FOR ISSUE INFORMATION.	-

SCALE 1:1	SHEET 5 OF 7
DRAWN	Sten Wahlstrom
APPROVED	
DERIVED FROM	
TITLE	
FLOOR MTG PULL TYPE	
SLIDING PEDAL BOX 2nd GEN	
DRG NO.	CP5548-1CD

A0 ASSEMBLY DRAWING

IF THIS DOCUMENT IS PRINTED IN HARD COPY, IT IS FOR INFORMATION USE ONLY AND THEREFORE IS NOT SUBJECT TO UPDATING CONTROLS. ALWAYS REFER TO SOLIDWORKS VIEWER FOR LATEST ISSUE



FIRST ANGLE PROJECTION

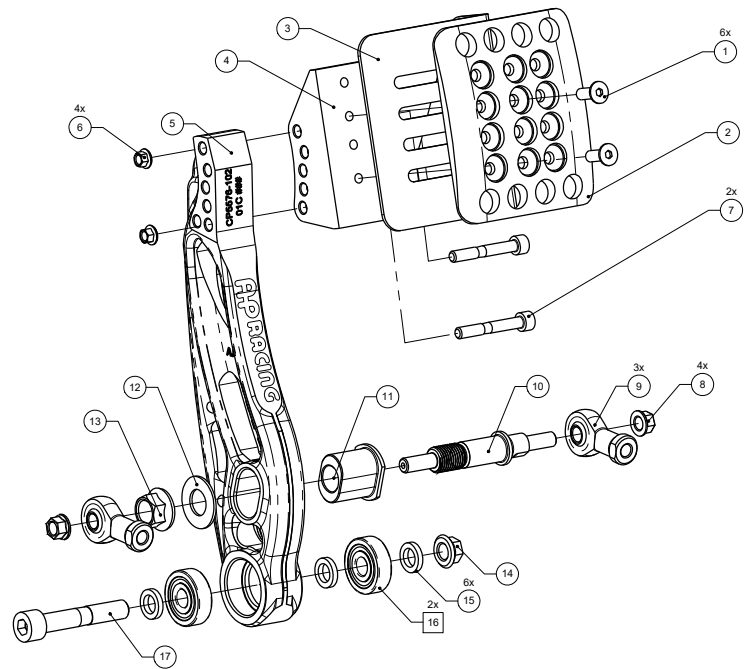
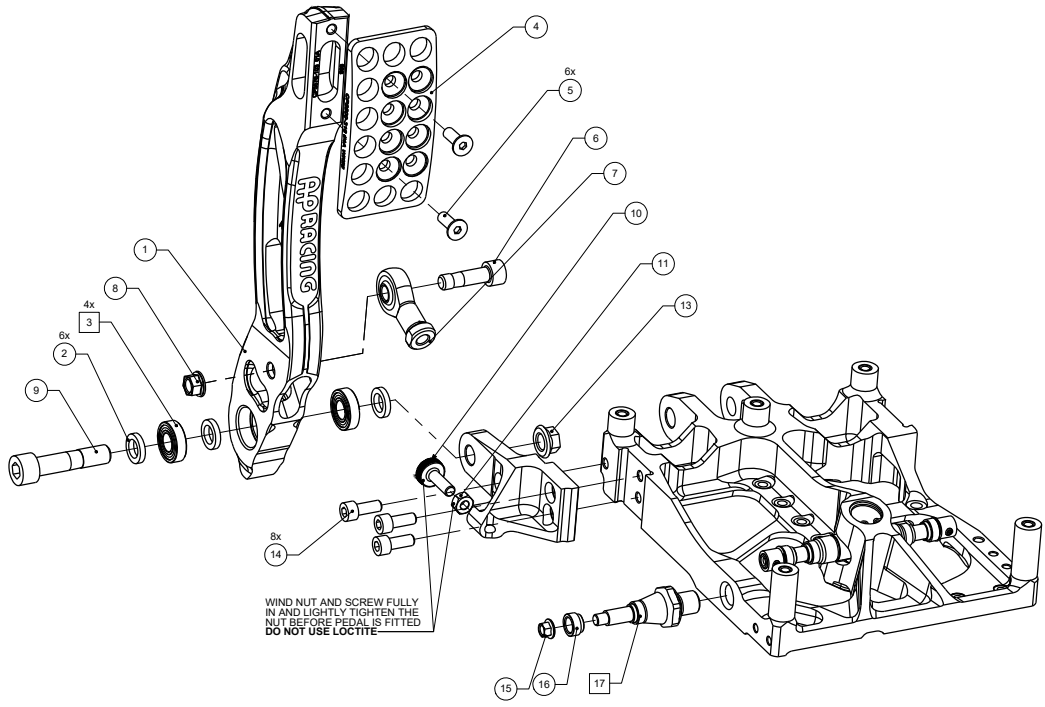
THIS DRAWING IS CONFIDENTIAL AND IS SUPPLIED ON THE EXPRESS CONDITION THAT IT SHALL NOT BE LOANED OR COPIED OR DISCLOSED TO ANY OTHER PERSON OR USED FOR ANY OTHER PURPOSE WITHOUT THE WRITTEN CONSENT OF AP RACING LTD.

AP RACING
 AP Racing
 Wheeler Road
 Coventry
 CV3 4LB
 Tel: +44 (0)24 7663 9595
 Fax: +44 (0)24 7663 9599
 e-mail: sales@apracings.co.uk
 © AP Racing Ltd. 2023
 Web site: HTTP://www.apracings.com

BRAKE SQUARE BOX AROUND ITEM No. INDICATES THAT LOCTITE IS USED

CLUTCH SQUARE BOX AROUND ITEM No. INDICATES THAT LOCTITE IS USED

BRAKE					
ITEM No.	PART No.	DESCRIPTION	QTY	TORQUE	LOCTITE
1	CP4350-106	SCREW-M6x14 CSK	2	10Nm	-
2	CP5500-330	BRAKE PEDAL FOOTPAD	1	-	-
3	CP5538-210	BRAKE GUARD PLATE	1	-	-
4	CP5516-137	BRAKE FOOTPAD ADJUSTER	1	-	-
5	CP5576-102	BRAKE PEDAL	1	-	-
6	CP3423-107	NUT M6x1.00 KAYLOCK	2	-	-
7	CP4370-114	SCREW-M6x42 CAP	2	10Nm	-
8	CP4611-111	NUT M8x1.25 KAYLOCK	2	25Nm	-
9	CP5506-106	ROD END M8x1.25	2	-	-
10	CP5576-104	PULLBAR FLANGED	1	-	-
11	CP5576-105	BEARING HOLDER	1	-	-
12	CP3307-258	WASHER-28.0x14.2x1.50	1	-	-
13	CP5576-107	NUT M14x1.50 KAYLOCK	1	50Nm	-
14	CP5427-101	NUT M10x1.50 KAYLOCK	1	-	-
15	CP5518-127	SPACER 16x10.2x3	3	-	-
16	CP5516-106	BRG BALL-30.0x10.0x09.0	2	-	648
17	CP5200-108	BOLTMCM-M10x58x1.50 CAP	1	40Nm	-



CLUTCH					
ITEM No.	PART No.	DESCRIPTION	QTY	TORQUE	LOCTITE
1	CP5576-103	CLUTCH PEDAL	1	-	-
2	CP5518-127	SPACER RING	3	-	-
3	CP5516-140	BEARING BALL-22.0x10.0x06.0	2	-	648
4	CP5500-318	PEDAL FOOTPAD	1	-	-
5	CP4350-106	SCREW-M6x14 CSK	2	10Nm	-
6	CP5517-132	BOLT-M8x27 CAP	1	25Nm	-
7	CP5506-106	ROD END M8x1.25	1	-	-
8	CP4611-111	NUT M8x1.25 KAYLOCK	1	-	-
9	CP5000-407	BOLTMCM-M10x45x1.50 CAP	1	40Nm	-
10	CP5548-204	KNURLED SCREW M6x1.00	1	SEE NOTE	-
11	ME21001	NUT M6x1.00	1	SEE NOTE	-
12	CP5548-150	CLUTCH PEDAL BRACKET	1	-	-
13	CP5427-101	NUT M10x1.50 KAYLOCK	1	-	-
14	CP5576-129PL	SCREW-M6x15 CAP	3	10Nm	-
15	CP3423-107	NUT M6x1.00 KAYLOCK	1	6.8Nm	-
16	CP5517-124	BALANCEBAR SPACER	1	-	-
17	CP5548-155	CLUTCH ATTACHMENT	1	50	243

Alterations		
Date & No.	Particulars	Drawn
-	SEE SHEET 1 FOR ISSUE INFORMATION.	-

SCALE 1:1	SHEET 6 OF 7
DRAWN Sten Wahlstrom	
APPROVED	
DERIVED FROM	
TITLE	
FLOOR MTG PULL TYPE	
SLIDING PEDAL BOX 2nd GEN	
DRG NO. CP5548-1CD	

A0 ASSEMBLY DRAWING

IF THIS DOCUMENT IS PRINTED IN HARD COPY, IT IS FOR INFORMATION USE ONLY AND THEREFORE IS NOT SUBJECT TO UPDATING CONTROLS. ALWAYS REFER TO SOLIDWORKS VIEWER FOR LATEST ISSUE

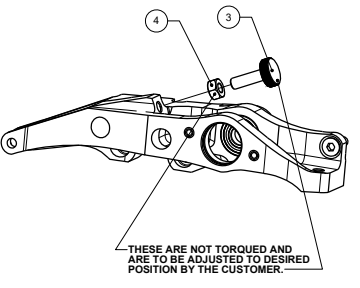
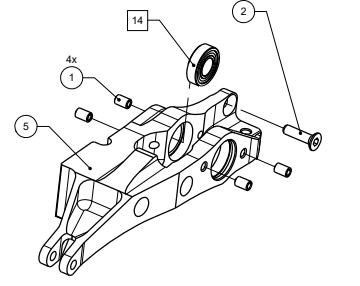


THIS DRAWING IS CONFIDENTIAL AND IS SUPPLIED ON THE EXPRESS CONDITION THAT IT SHALL NOT BE LOANED OR COPIED OR DISCLOSED TO ANY OTHER PERSON OR USED FOR ANY OTHER PURPOSE WITHOUT THE WRITTEN CONSENT OF AP RACING LTD.

AP RACING
 AP Racing
 Wheeler Road
 Coventry
 CV3 4LB
 Tel: +44 024 7663 9595
 Fax: +44 024 7663 9599
 e-mail: sales@apracings.co.uk
 © AP Racing Ltd. 2023 Web site: HTTP://www.apracings.com

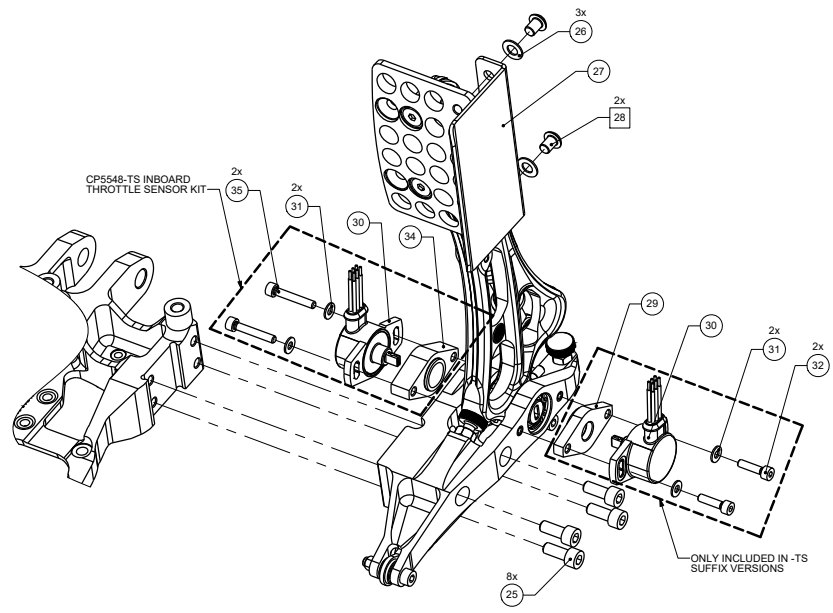
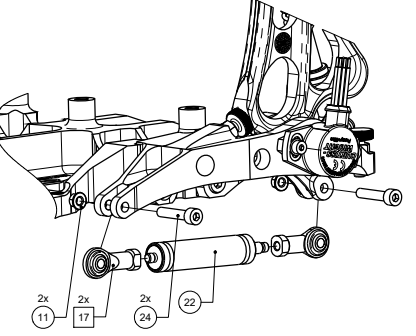
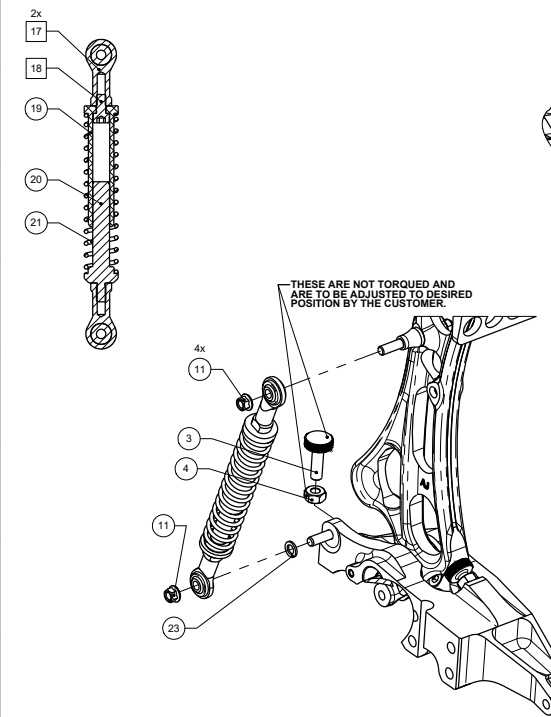
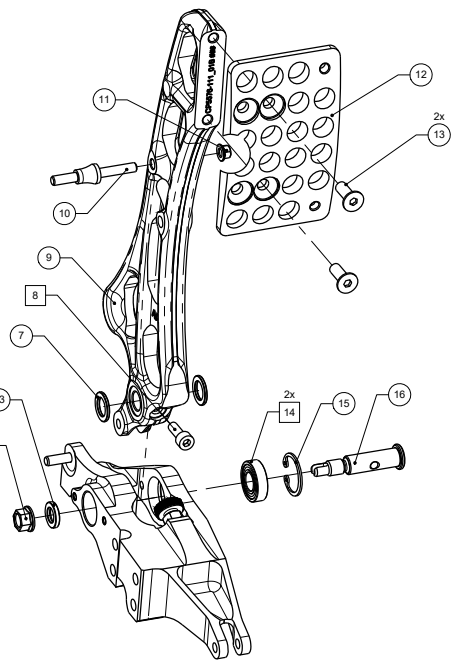
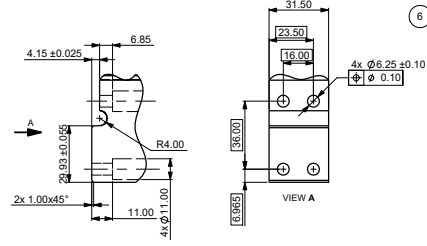
THROTTLE SQUARE BOX AROUND ITEM No. INDICATES THAT LOCTITE IS USED

ITEM No.	PART No.	DESCRIPTION	QTY	TORQUE	LOCTITE
1	CP2494-3037	HELICOIL-M4x0.70x2.0DLK	4	-	-
2	CP2494-3078	SCREW-M5x20 CSK	1	6.8Nm	-
3	CP5548-204	KNURLED SCREW M6x1.00	2	SEE NOTE	-
4	ME21001	NUT M06x1.00	2	SEE NOTE	-
5	CP5548-200	THROTTLE PEDAL BRACKET	1	-	-
6	CP4611-111	NUT M8x1.25 KAYLOCK	1	25Nm	-
7	CP5538-208	SPACER RING	2	-	-
8	CP5516-208	BOLT -M5x14x0.8 CAP	1	6.8Nm	243
9	CP5576-111	THROTTLE PEDAL	1	-	-
10	CP5548-206	SPRING MECHANISM ATTACHMENT	1	-	-
11	CP5576-126	NUT M5x0.80 KAYLOCK	5	6.8Nm	-
12	CP5516-167	THOTTLE PEDAL FOOTPAD	1	-	-
13	CP4350-106	SCREW-M6x14 CSK	2	10Nm	-
14	CP5516-140	BRG BALL-22.0x10.0x06.0	2	-	648
15	CP5516-162	CIRCLIP INT 23.10	1	-	-
16	CP5548-202	THROTTLE PIVOT SHAFT	1	-	-
17	CP5548-208	ROD END M5x0.8	4	-	270
18	CP9100-132	BOLT-M5x10x0.80 CAP	1	2Nm	243
19	CP5548-211	SPRING STRUT BODY	1	-	-
20	CP5548-212	SPRING STRUT ROD	1	-	-
21	CP5576-117	COMPRESSION SPRING	1	-	-
22	CP5548-207	HYDRAULIC DAMPER	1	-	-
23	CP5896-144	WASHER-9.0x5.3x1.0	2	-	-
24	CP5500-119	SCREW-M5x25 CAP	2	6.8Nm	-
25	CP5576-129PL	SCREW-M6x15 CAP	4	10Nm	-
26	CP2494-1305	WASHER-12.5x06.5x0.80	2	-	-
27	CP5516-164	THOTTLE GUARD PLATE	1	-	-
28	CP2749-194	SCREW-M6x8 BUT	2	8Nm	243
29	CP5548-203	THROTTLE SENSOR PLATE OUTBOARD	1	-	-
30	CP5548-209	THROTTLE POSITION SENSOR	1	-	-
31	CP7000-170	WASHER-9.0x4.2x0.8	2	-	-
32	CP3833-182	SCREW-M4x16 CAP	2	3.5Nm	-
33	CP5576-145	WASHER 14.5x8.2x.4	1	-	-
34	CP5548-210	THROTTLE SENSOR PLATE INBOARD	1	-	-
35	CP7350-109	SCREW-M4x25 CAP	2	3.5Nm	-



THROTTLE BRACKET DIMENSIONS

SUGGESTED INTERFACE DIMENSIONS FOR MOUNTING THROTTLE MODULE TO THE BASEPLATE.



Alterations		Particulars	Drawn	Checked
Date	No.			
-	-	SEE SHEET 1 FOR ISSUE INFORMATION.		

SCALE 1:1 SHEET 7 OF 7
 DRAWN: Sten Wahlstrom
 APPROVED: _____
 DERIVED FROM: _____
 TITLE: FLOOR MTG PULL TYPE SLIDING PEDAL BOX 2nd GEN
 DRG NO.: CP5548-1CD